

# Aluminum Anodes

Corrpro's Aluminium anode alloy 778S specifically meets the rigorous demands of the offshore industry. The anode alloy was introduced following extensive trials and independent verification of the alloys long term electrochemical Performance.

Applications for 778S includes offshore platforms, semi-submersibles, jack ups, FPSO's, submarine pipelines, wellheads and other types of submerged steel structures. 778S can also be used to Cathodically protect further types of marine structures including vessels, wind farms, outfalls, pump caissons, steel pilings, jetties, harbours and wharfs.

The 778S alloy anodes are suitable for use in a wide range of environments, water depths and temperatures. The excellent characteristics of 778S provide stable long term electrochemical performance, uniform consumption and high electrochemical capacity.

Our standard range of alloys is detailed in the tables. Other alloy formulations or modifications to the standard alloys, e.g. in respect of limits on residual elements such as iron, can be manufactured to customer specification.

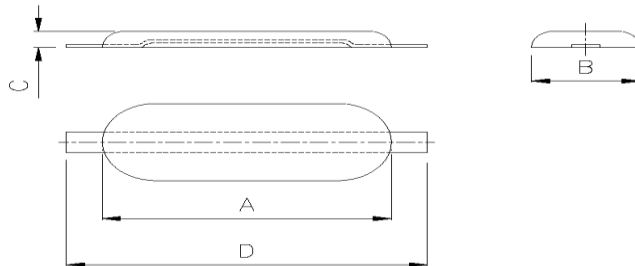
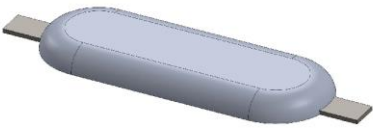
## Specification

	BA778S	Aloline	BA778S Low Fe
<b>Element</b>	<b>Analysis (% by Weight)</b>		
Zinc	3.0 – 5.5	3.0 – 5.5	4.75 – 5.75
Indium	0.015 – 0.04	0.01 – 0.02	0.016 – 0.020
Iron	0.09 max	0.13 max	0.06 max
Silicon	0.10 max	0.10 max	0.12 max
Copper	0.005 max	0.005 max	0.003 max
Titanium	0.02 max	0.02 max	0.02 max
Others	0.02 max each	0.02 max each	0.02 max each
Aluminium	Remainder	Remainder	Remainder
Solution Potential (Closed Circuit)	1.10V wrt Ag/AgCl	1.10V wrt Ag/AgCl	1.10V wrt Ag/AgCl
Capacity (mean)	2600 Ah/Kg	2600 Ah/Kg	2600 Ah/Kg
Alloy Density	2.71 g/cc	2.71 g/cc	2.71 g/cc

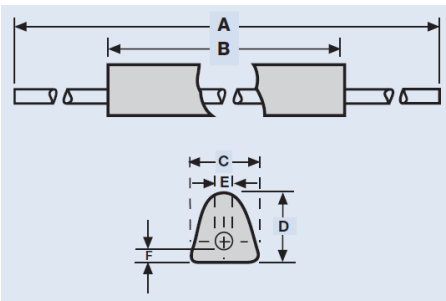
**Note: 778S electrochemical properties are in accordance with DNV-RP-B401 long-term testing**

Corrpro, formally Wilson Walton International, has an extensive range of standard anode types, including flush-fit, stand-off and bracelet anodes comprising of conventional half shell and tapered designs, segmented and saddle anodes. A list of some of the standard types is provided below, however after casting anodes for more than 30 years, Corrpro has the experience and expertise to produce anodes that meet most client's specific requirements. Alternatively, Corrpro can provide bespoke sacrificial anode Cathodic Protection systems that mitigate corrosion throughout the complete design life of any structure.

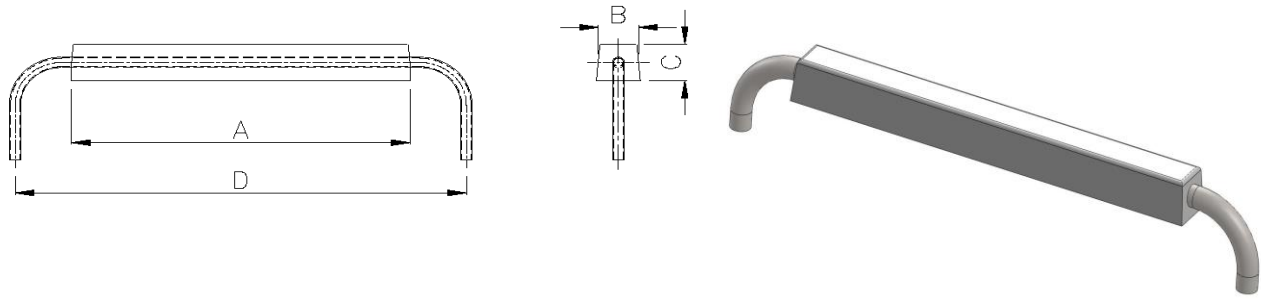
Hull Anodes							
Type	A	B	C	D	Insert (mm)	Nett Weight Kg	Gross Weight Kg
W131	300	200	95	32	20 x 3	1.2	1.3
W130	350	270	150	32	40 x 6	2.6	3.2
W111	500	400	150	32	40 x 6	4.0	5.0
W114	650	550	130	50	40 x 6	8.0	9.2
W117	650	550	130	65	50 x 6	10.1	11.6
W119	650	550	130	75	50 x 6	12.6	14.1
W118	650	550	130	95	50 x 6	16.5	18.0
W124	1015	920	130	50	50 x 6	13.0	15.4
W126	1015	920	130	75	50 x 6	21.0	24.0
W128	1015	920	130	105	50 x 6	30.0	33.0



Tank Anodes								
Type	A	B	C	D	E	F (Dia)	Nett Wt.	Gross Wt.
W110	1225	765	50	40	50	12	4.2	5.3
W115	1985	1525	50	40	50	12	8.4	10.2
W156	765	305	70	50	76	12	3.3	3.8
W155	1070	610	70	50	76	12	7.1	8.1
W154	1222	762	70	50	76	12	8.7	10.0
W153	1476	1016	70	50	76	12	11.6	13.1
W152	1730	1270	70	50	76	12	14.5	16.3
W151	1984	1524	70	50	76	12	17.3	19.3
W196	765	305	95	75	85	12	5.8	6.5
W195	1060	600	95	75	85	12	12.2	13.1
W194	1210	750	95	75	85	12	15.0	16.1
W193	1465	1005	95	75	85	12	20.2	21.5
W192	1720	1260	95	75	85	12	25.4	26.9
W191	1984	1524	95	75	85	12	30.9	32.7



Stand-Off Anodes							
Type	A	B	C	D	Core Dia (inch)	NNett Wt (Kg)	Gross Wt (Kg)
AR2217	1300	91	92	1330	1" NB	20.3	26.5
AR33133	970	132	127	1510	2" NB	36.6	50.4
AR44164	2000	189	170	2780	3" NB	140.5	190.0
AR55170	3035	210	227	3836	4" NB	307.9	405.7
AR55192	1800	215	214	2340	2" NB	210.5	234.9
AR6617	2400	250	246	3200	4" NB	336.5	419.6



Pipeline Bracelet Anodes			
Pipe OD (inches)	Length (mm)	Thickness (mm)	Net Weight (Kg)
4"	100	75	21
6"	320	73	26
10"	300	51	55
16"	532	50	86
22"	501	40	90
24"	650	50	154
36"	870	45	287
42"	509	70	299

